

COMUNE di MONTEPULCIANO
Provincia di Siena

Responsabile del procedimento
Massimo Bertone

Sindaco
Andrea Rossi

Garante della comunicazione
Vanla Lombardelli

Progettisti
Paolo Corsi
Fabrizio Mezzedimi
Roberto Vezzosi

Consulenti
Aspetti geologici e idraulici:
Progeo associati
Fabio Poggi, Massimiliano Rossi
Alessandro Berni, Lorenzo Corri
Aspetti agronomici:
Monica Coletta

Collaboratori
Massimo Tofanelli
Elisa Butelli

Sistema informativo
ldp progetti gis

REGOLAMENTO URBANISTICO

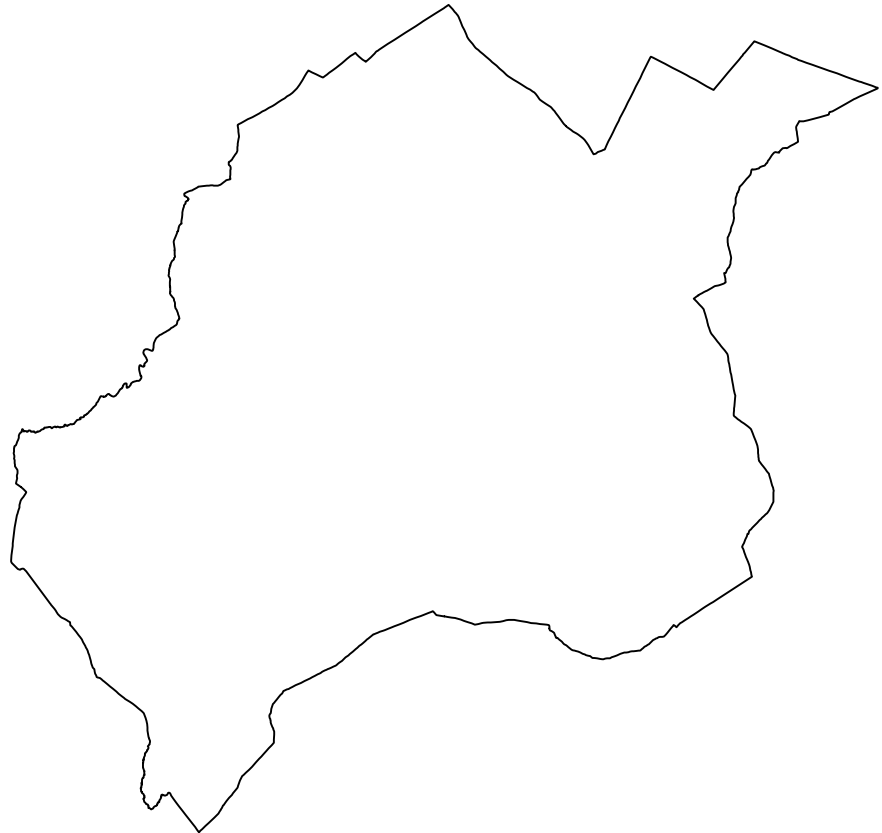
STUDIO IDROLOGICO - IDRAULICO

Giugno 2011

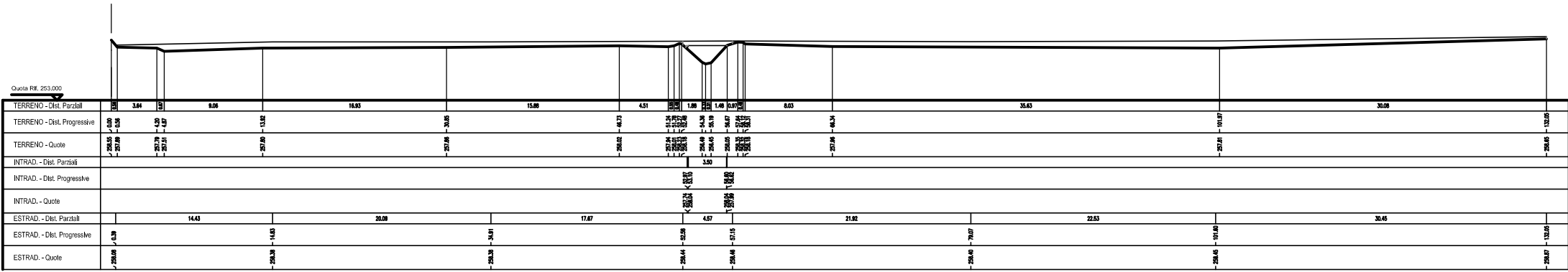
TAVOLA 3c

SEZIONI IDRAULICHE
Gracciano

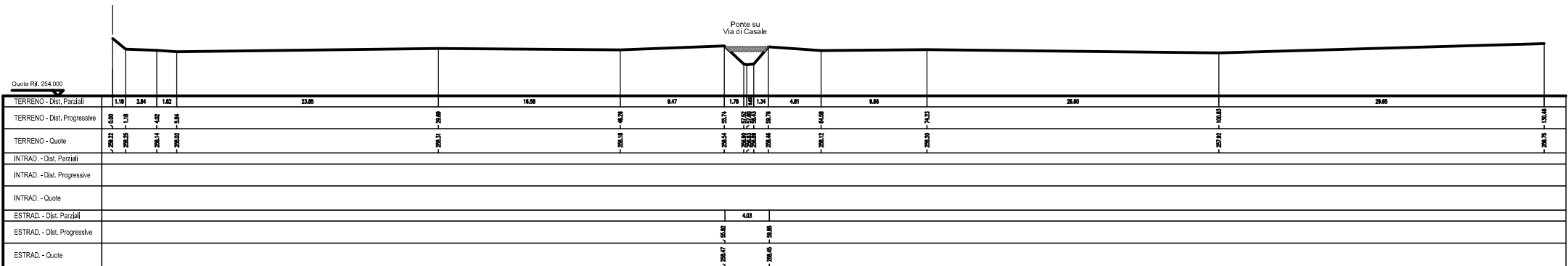
scala 1:500



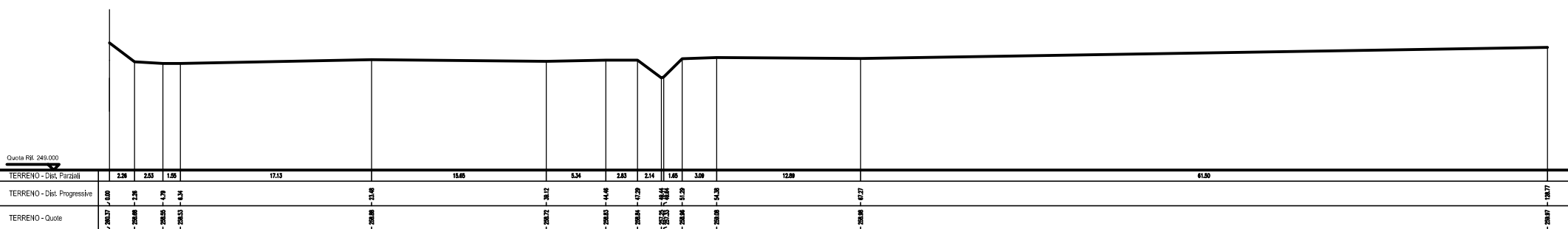
SEZIONE 39



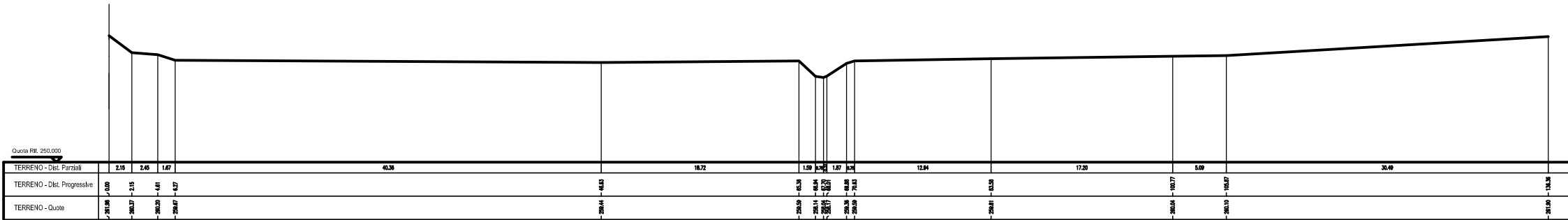
SEZIONE 40



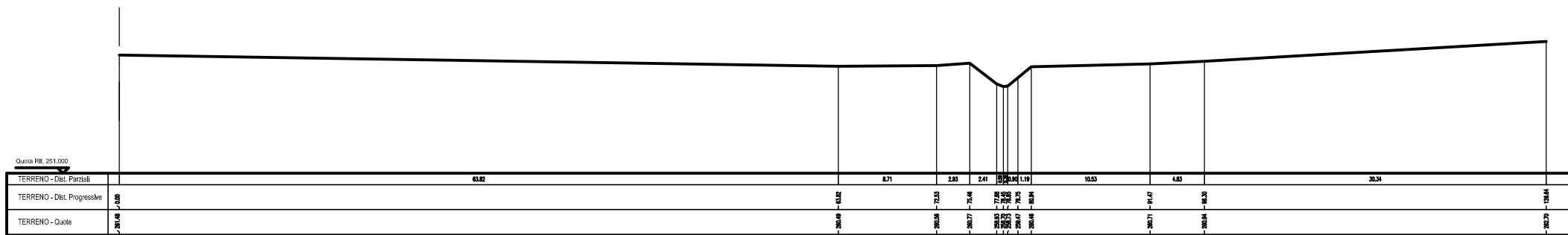
SEZIONE 41



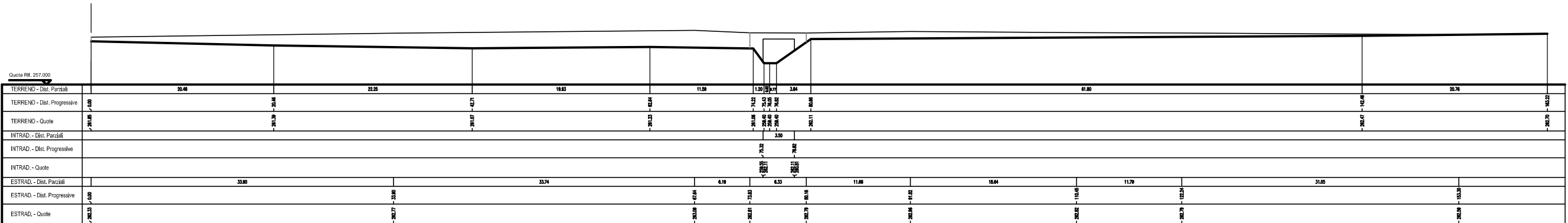
SEZIONE 42



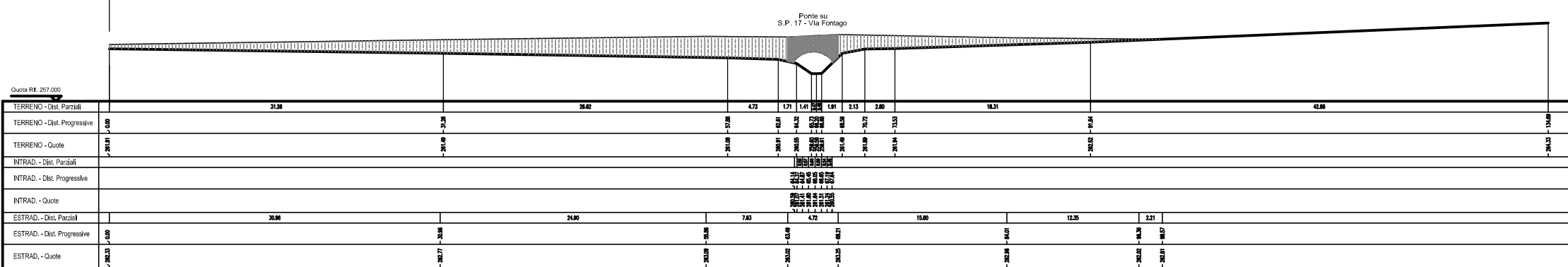
SEZIONE 43



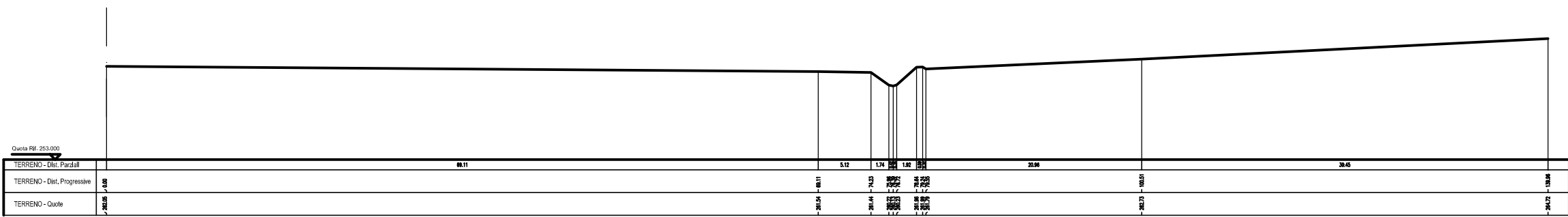
SEZIONE 44



SEZIONE 45



SEZIONE 46



SEZIONE 47

