

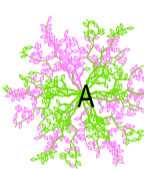
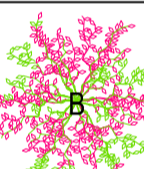
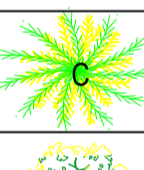
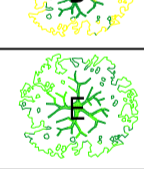
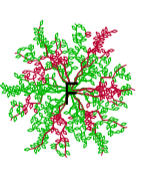
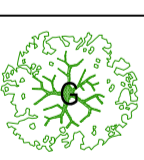

VIA PIERO CALAMANDREI 49 INT. 40 - TEL. E FAX 0578756024
53045 - MONTELUCCIANO (SI)

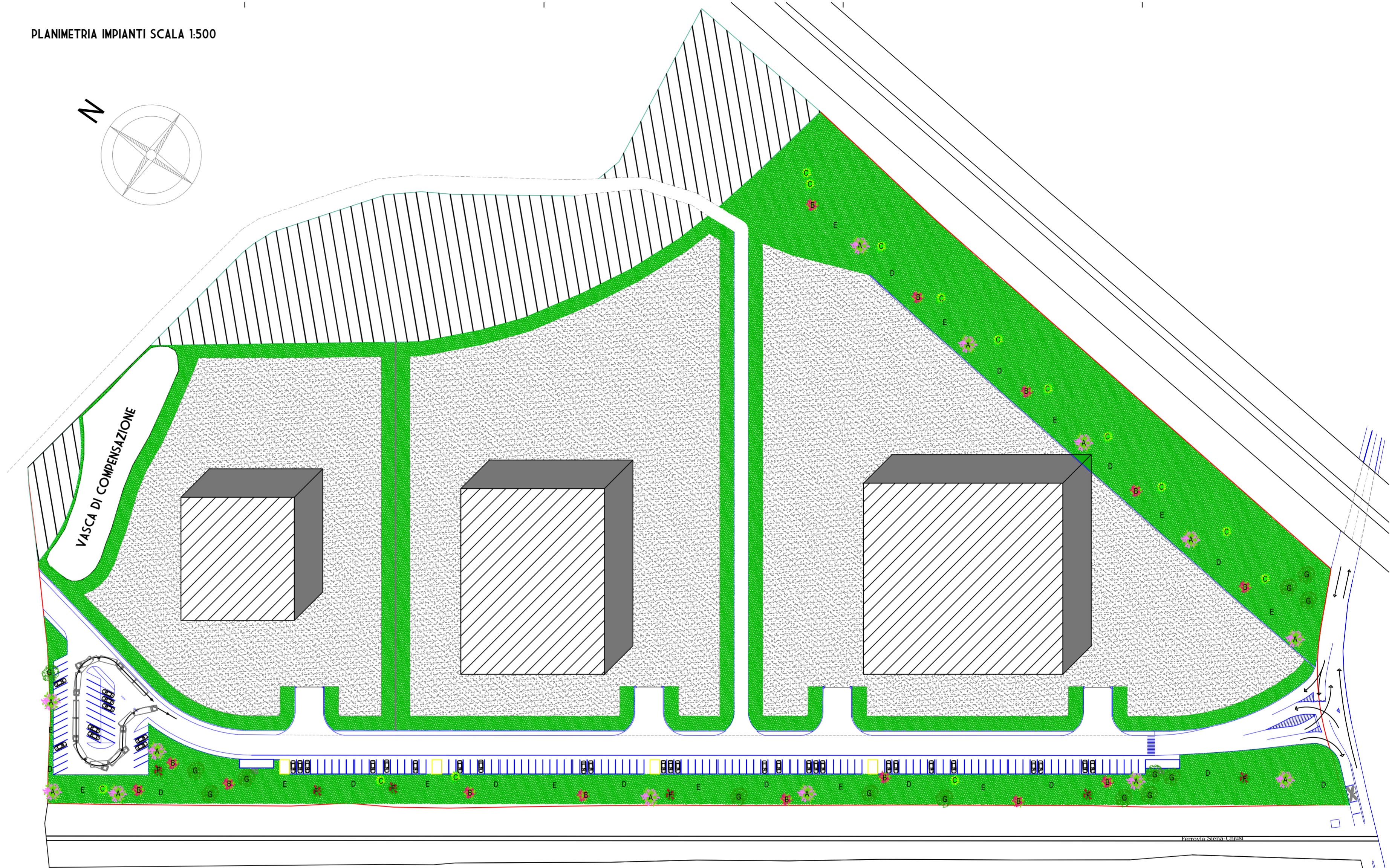
VARIANTE
LOTTIZZAZIONE PRODUTTIVA A_PA_08
VIA DEL SANTO-ACQUAVIVA

12-008

SETTEMBRE 2014 1500 1 VARIANTE ALLA PLANIMETRIA GENERALE DI
PROGETTO LOTTI-STRADE-AREE VERDI-PARCHEGGI

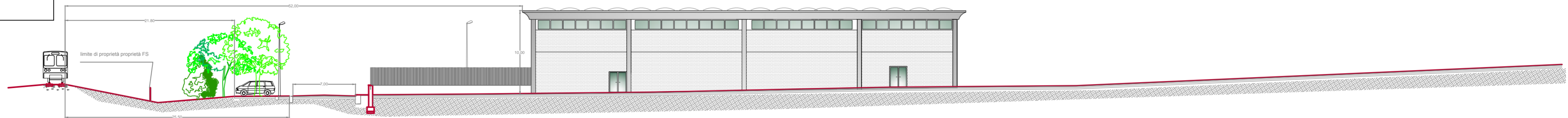
Tabella delle essenze

| | Nome | Caratteristiche | N-° |
|--|--|--|-----|
|  | Cecis Siliquastrum (albero di Giuda) | Chioma < 10 ml. Fusto tra 10 - 12 ml. | 13 |
|  | Lagerstroemia Indica | Chioma < 10 ml. Fusto tra 6 - 8 ml. | 14 |
|  | Calicanto d'inverno (arbusto cespuglioso) | Chioma < 4 ml. Fusto tra 2 - 3 ml. | 14 |
|  | Koeleruteria Paniculata (paternostri o albero del sapone) | Chioma < 8 ml. Fusto tra 10 - 12 ml. | 14 |
|  | Melia Azedarach (Falso sicomoro) | Chioma < 10 ml. Fusto tra 12 - 14 ml. | 13 |
|  | Acer Rubrum Morgan (acero rosso) | Chioma < 4 ml. Fusto tra 10 - 12 ml. | 6 |
|  | Tuja d'Oriente (sempreverde cupressacee) | Chioma < 5 ml. Fusto tra 3 - 6 ml. | 14 |

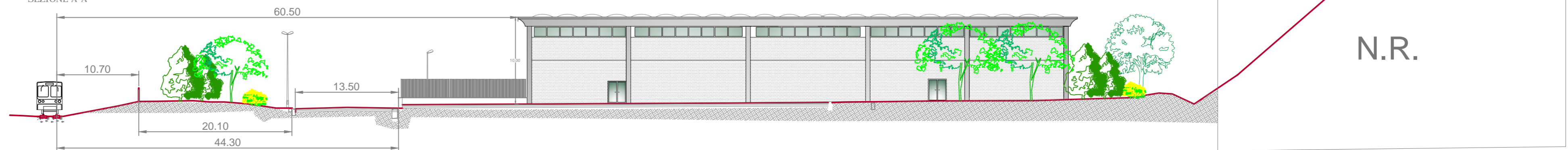


SEZIONI SCALA 1:200

SEZIONE B-B



SEZIONE A-A



N.R.